

Tulare County Fire Department and General Services

Board of Supervisors Board Meeting in Strathmore

April 2, 2019



Station 1 Updates

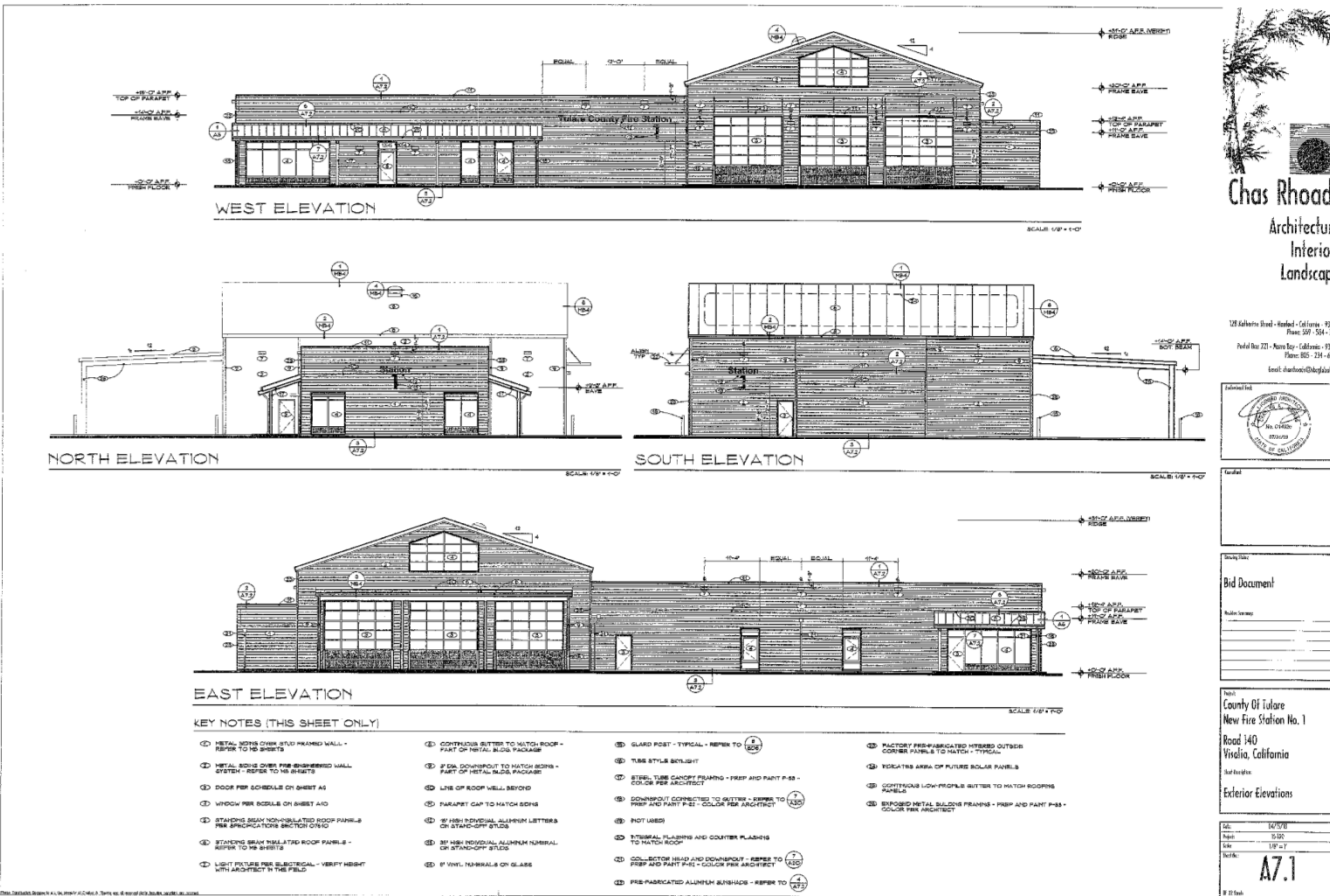
- ▶ Getting ready to begin building
- ▶ 256 Adjacent to Road Yard near the new Transit Building
- ▶ Differences between the old style stations and Station 1
- ▶ Areas of service
- ▶ \$4.3 million budget (\$1.2 million from future fire department projects)
- ▶ Future Needs and Plans

Location

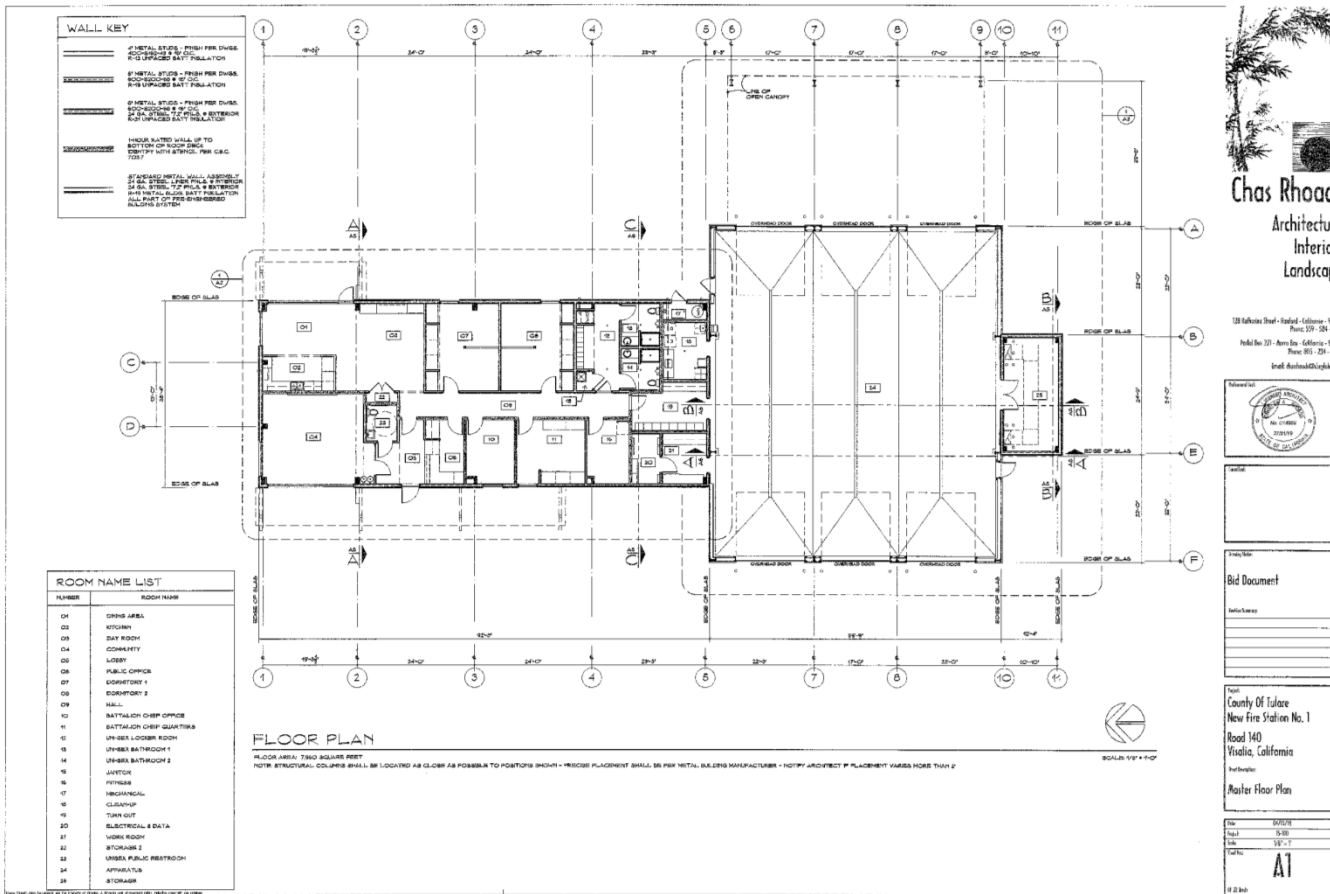


Road Yard
(Ave. 256 &
Road 140)

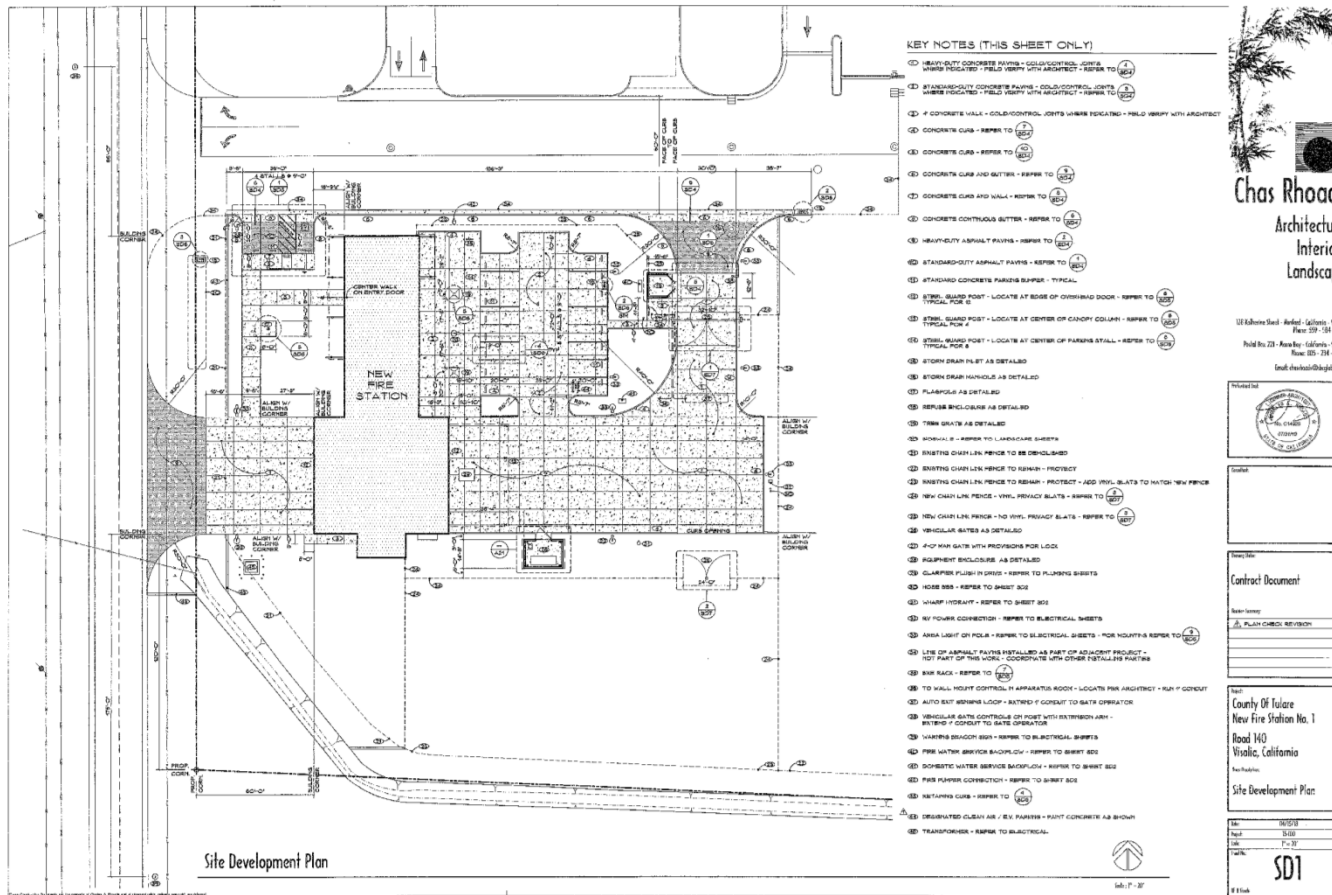
Elevation Station 1



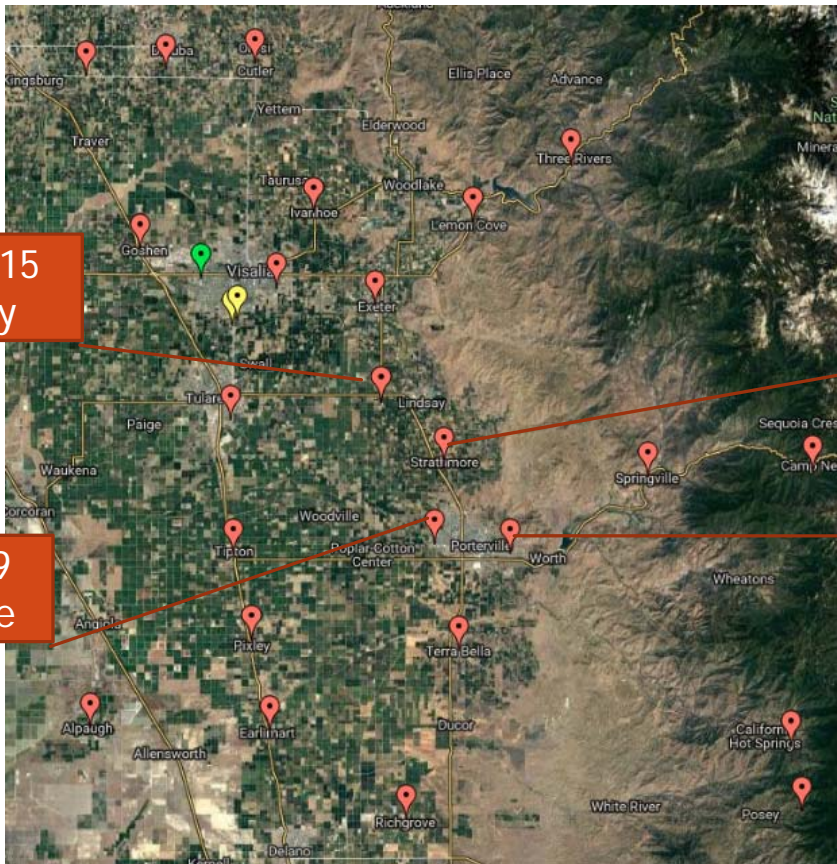
Floor Plan Station 1



Site Plan Station 1



Current Service Area



Station 15
Lindsay

Station 16
Strathmore

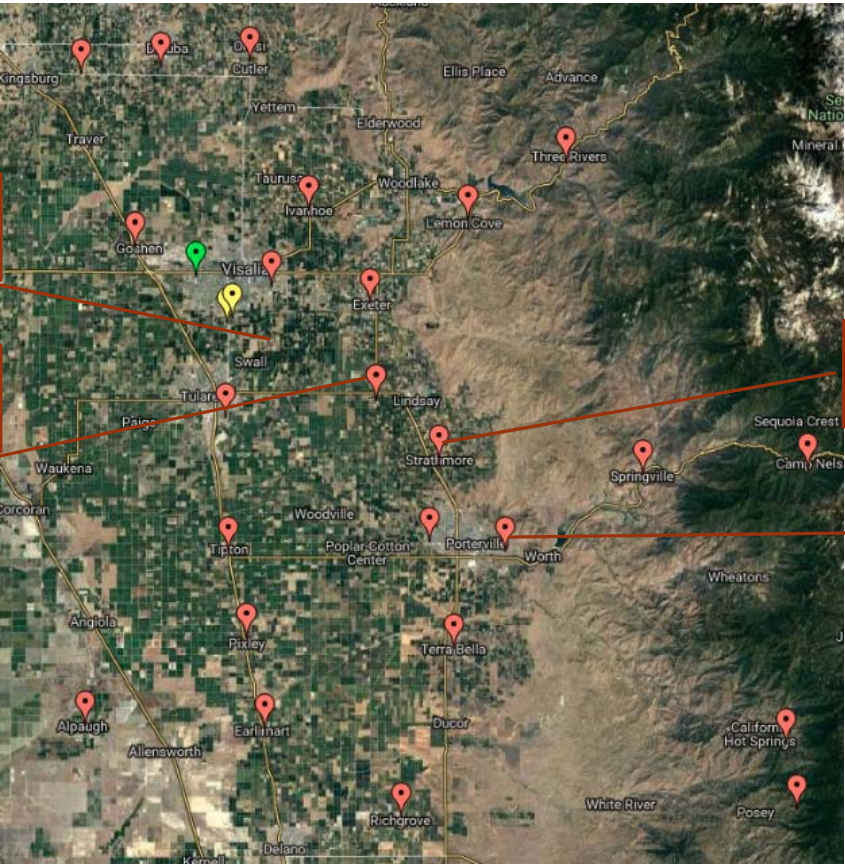
Station 19
West Olive

Station 20
Doyle Colony

New Service Area

New Station 1

Station 15 Lindsay



Station 16 Strathmore

Station 19 West Olive

Strathmore Station #16 - Aerial View



Strathmore Station #16 - Street View



Old Apparatus vs. New Apparatus



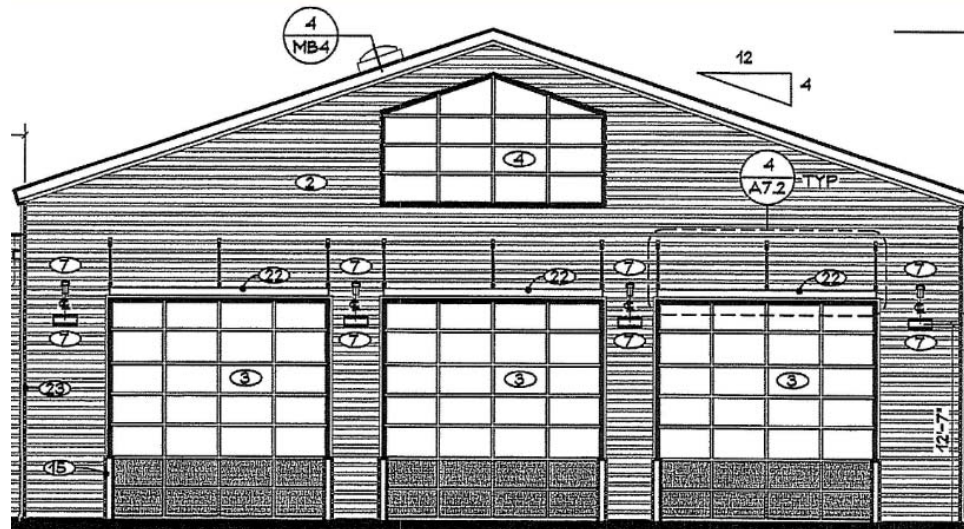
- ▶ 1987 Beck Fire Engine vs. a new Rosenbauer Type 1 Engine

Apparatus Bays

- ▶ Older Stations have Apparatus Bays of about 10' in height with an interior ceiling height of about 11'.

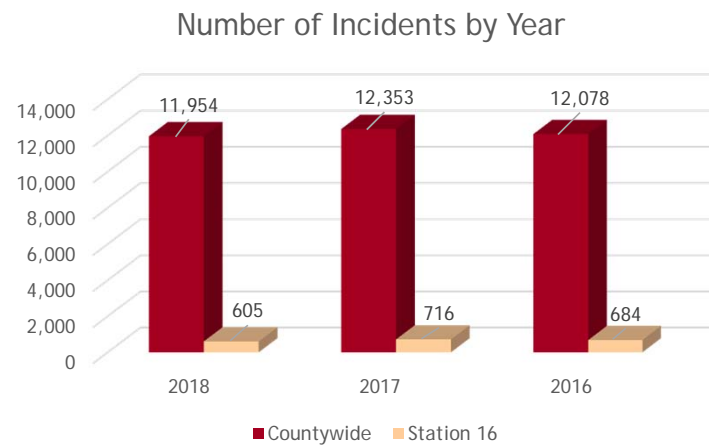


- ▶ New Stations have Apparatus Bays of about 14' in height to meet increase in size of new Fire Apparatus.

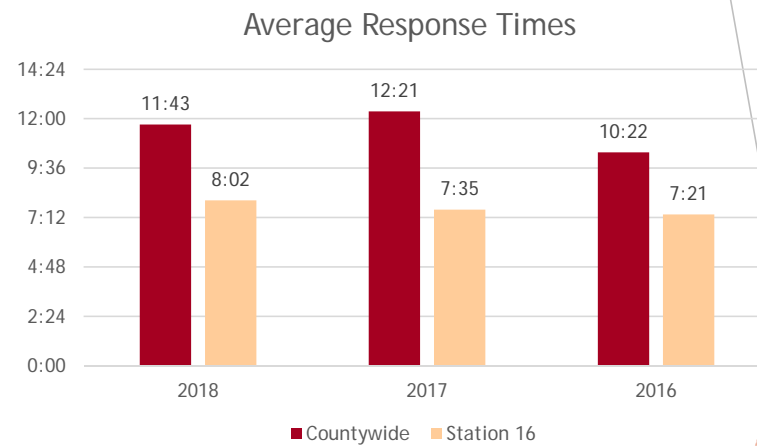


Current Incident Stats for Strathmore

▶ Total calls countywide per year



▶ Average Response Times



Questions and/or Comments